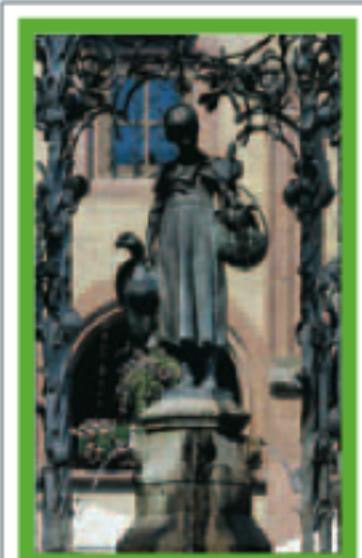


L'Allemagne région par région



HAMBOURG, BRÈME ET BASSE-SAXE
Pages 424-453



SCHLESWIG-HOLSTEIN
Pages 454-465



SAXE-ANHALT
Pages 142-157



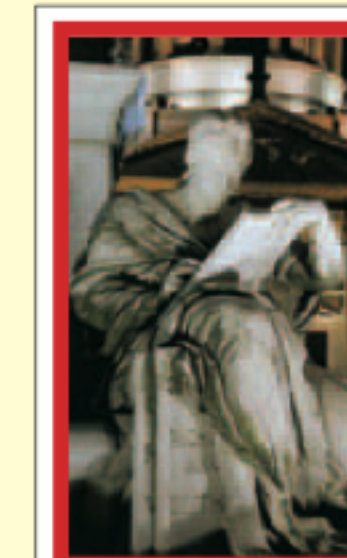
MECKLEMBOURG-POMÉRANIE ANTÉRIEURE
Pages 466-481



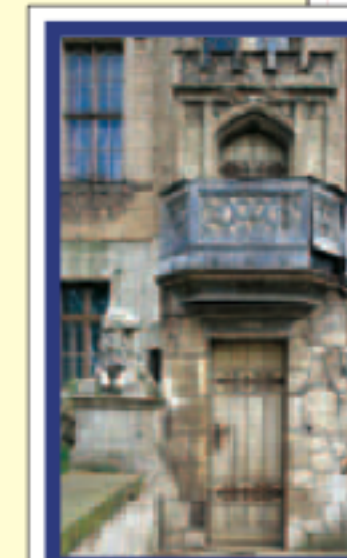
HESSE
Pages 360-381



RHÉNANIE-DU-NORD-WESTPHALIE
Pages 382-415



BERLIN
Pages 62-119



BRANDEBOURG
Pages 128-141



RHÉNANIE-DU-NORD-WESTPHALIE
Pages 382-415



L'OUEST DE L'ALLEMAGNE
Pages 382-415



HESSE
Pages 360-381



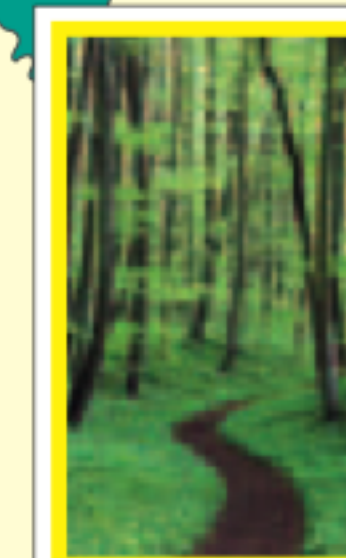
THURINGE
Pages 182-197



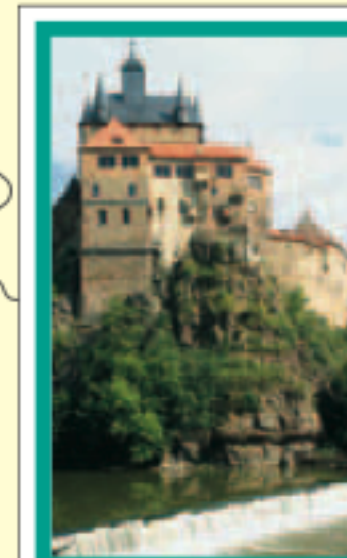
SAXE-ANHALT
Pages 142-157



L'EST DE L'ALLEMAGNE
Pages 128-141



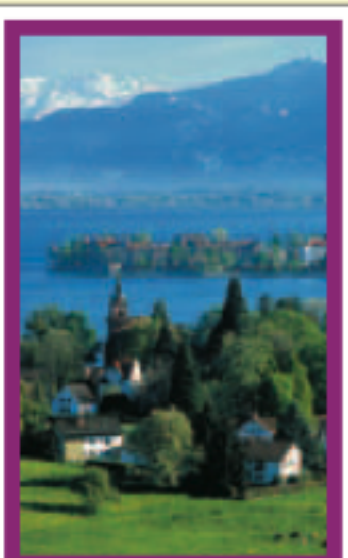
THURINGE
Pages 182-197



SAXE
Pages 158-181



RHÉNANIE-PALATINAT ET SARRE
Pages 336-359



BADE-WURTEMBERG
Pages 288-327



RHÉNANIE-PALATINAT ET SARRE
Pages 336-359



LE SUD DE L'ALLEMAGNE
Pages 288-327



BADE-WURTEMBERG
Pages 288-327



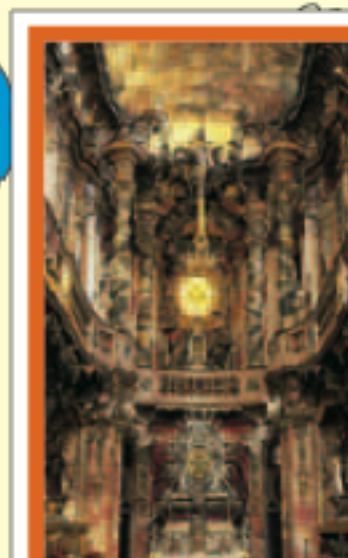
LE SUD DE L'ALLEMAGNE
Pages 288-327



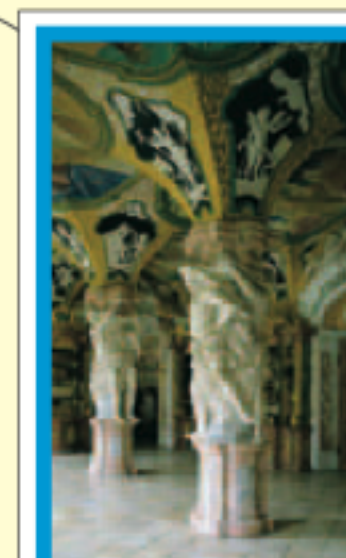
BAVIÈRE
Pages 238-287



BAVIÈRE
Pages 238-287



MUNICH
Pages 206-237



BAVIÈRE
Pages 238-287

0 100 km

